

UNIC **UR-V805**

TRUCK-MOUNTED CRANE



18,000 lbs
MAXIMUM LIFT CAPACITY



52ft | **62ft**
BOOM LENGTH | TIP HEIGHT

**BEHIND
THE CAB
OR REAR**
MOUNTING OPTIONS

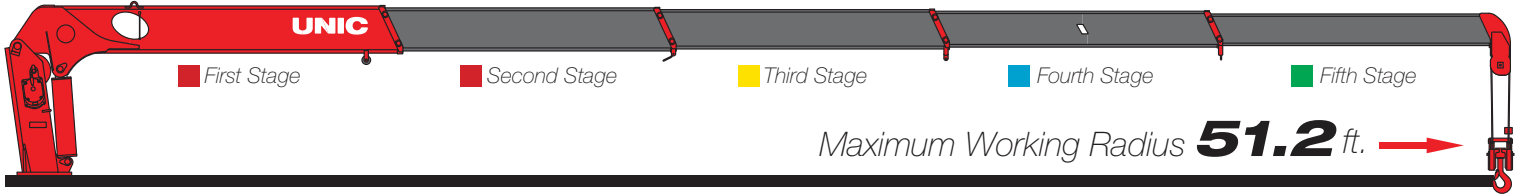


**REMOTE CONTROL
OPTION AVAILABLE**

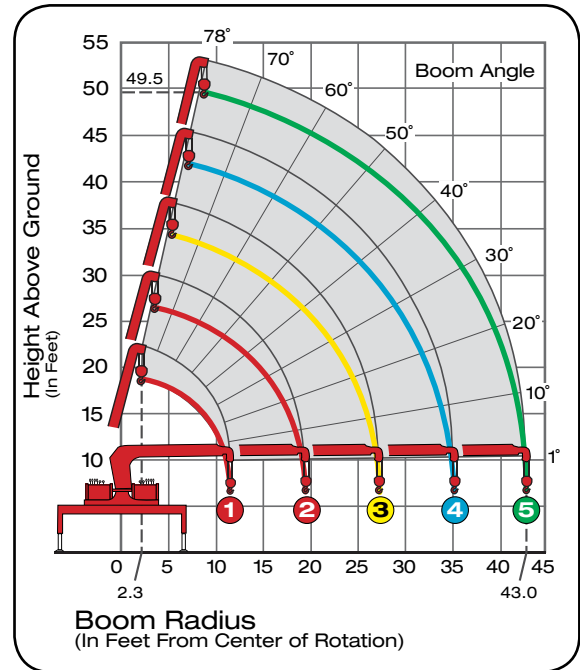
UNIC
UR-V805

UNIC UR-V805

5-Section Boom



Boom Radius (Ft)	All Booms Retracted	2nd Stage	3rd Stage	4th Stage	5th Stage
5	18000	13200			
5.9	18000	13200	6500		
7.9	13200	13200	6500	5700	4400
9	11100	11100	6500	5700	4400
10	10000	10000	6500	5700	4400
11.5	8800	8800	6500	5700	4400
13	7700	7700	6500	5700	4400
13.5	7600	7600	6500	5700	4400
15		6800	6500	5700	4400
16.5		6100	5900	5700	4400
19.5		4850	4850	4400	4400
23		3950	3950	3700	3600
26			3400	3200	3050
29.5			2750	2750	2650
32.5			2250	2300	2200
36				1950	1950
39				1650	1750
42.5				1400	1550
46					1300
49					1100
51.2					1000



Model UR-V805 Performance Specs

Maximum Lift Capacity	18,000lbs @ 5.9ft	Boom Length	14.4ft to 52.2ft
Lift Capacity - 10ft	10,000 lbs	Boom Sections	Five (5)
Lift Capacity - 19.5ft	4850 lbs	Swing Rotation	360° Continuous
Lift Capacity - 51.2ft	1000 lbs	Out & Down Outriggers	Two (2)
Tip Height	62 ft	Operating Weight	7,040 lbs
Working Radius	2.4ft to 51.2ft	Minimum Chassis	26,000 GVWR



800.452.5011
smileyliftingsolutions.com

NATIONWIDE RENTALS | SALES | SERVICE
FINANCING AVAILABLE