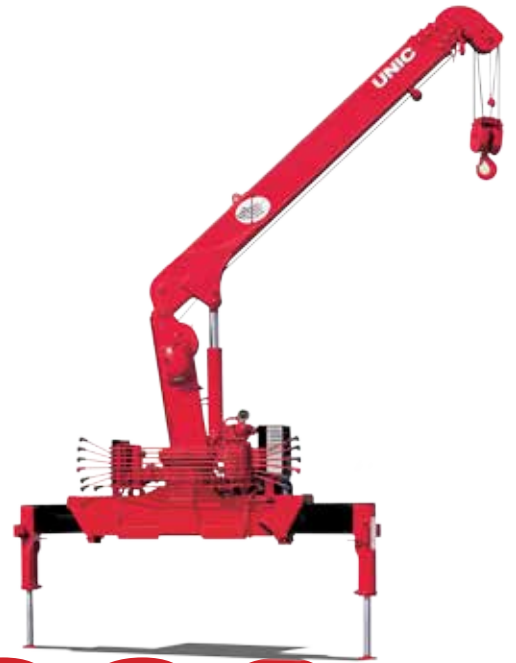


UNIC
UR-V295

CITY series
By Smiley Lifting

UNIC **UR-V295** TRUCK-MOUNTED CRANE



7,000 lbs
MAXIMUM LIFT CAPACITY

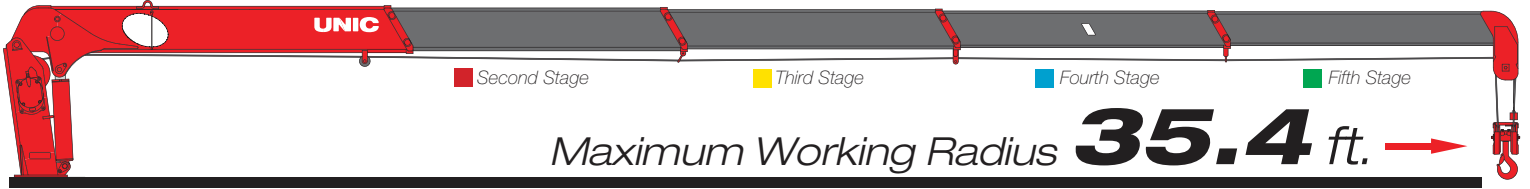


35.4ft | 43ft
BOOM LENGTH | TIP HEIGHT

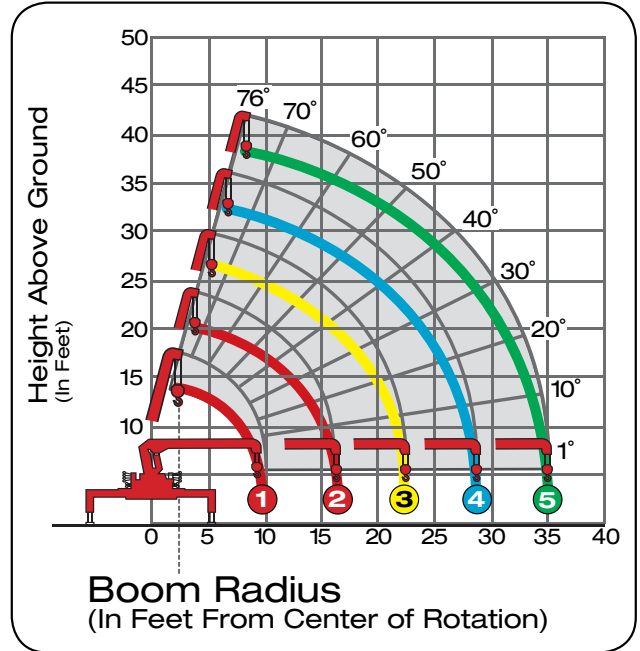
**BEHIND
THE CAB
OR REAR**
MOUNTING OPTIONS



**REMOTE CONTROL
OPTION AVAILABLE**



Model UR-V295 Telescopic Boom Design	
Maximum Lift Capacity	7,000lbs @ 5.5ft
Lift Capacity - 7ft	4,270lbs
Lift Capacity - 14.5ft	1,990lbs
Lift Capacity - 35ft	400lbs
Tip Height	43ft
Working Radius	2.4ft to 35.4ft
Boom Length	10.3ft to 35.4ft
Boom Sections	Five (5)
Swing Rotation	360° Continuous
Out & Down Outriggers	Two (2)
Operating Weight	2,250lbs
Minimum Chassis	14,000 GVWR



Boom Radius	5ft	6ft	6.6ft	7ft	8.2ft	10ft	11.5ft	13ft	14.5ft	16ft	18ft	19.5ft	23ft	26ft	30ft	33ft	35ft
1st Stage	7000	5370	4710	4270	3830	3160											
2nd Stage	7000	5370	4710	4270	3830	3160	2720	2280	1990	1840							
3rd Stage				3830	3380	2830	2390	2060	1840	1620	1480	1390	1170				
4th Stage						2060	1840	1620	1480	1390	1170	1060	910	800	730		
5th Stage								1060	950	840	730	670	580	510	450	400	400



800.452.5011
smileyliftingsolutions.com

NATIONWIDE RENTALS | SALES | SERVICE
FINANCING AVAILABLE