



Performance Specifications

Telescopic Hydraulic Truck Crane

Model
UR1543

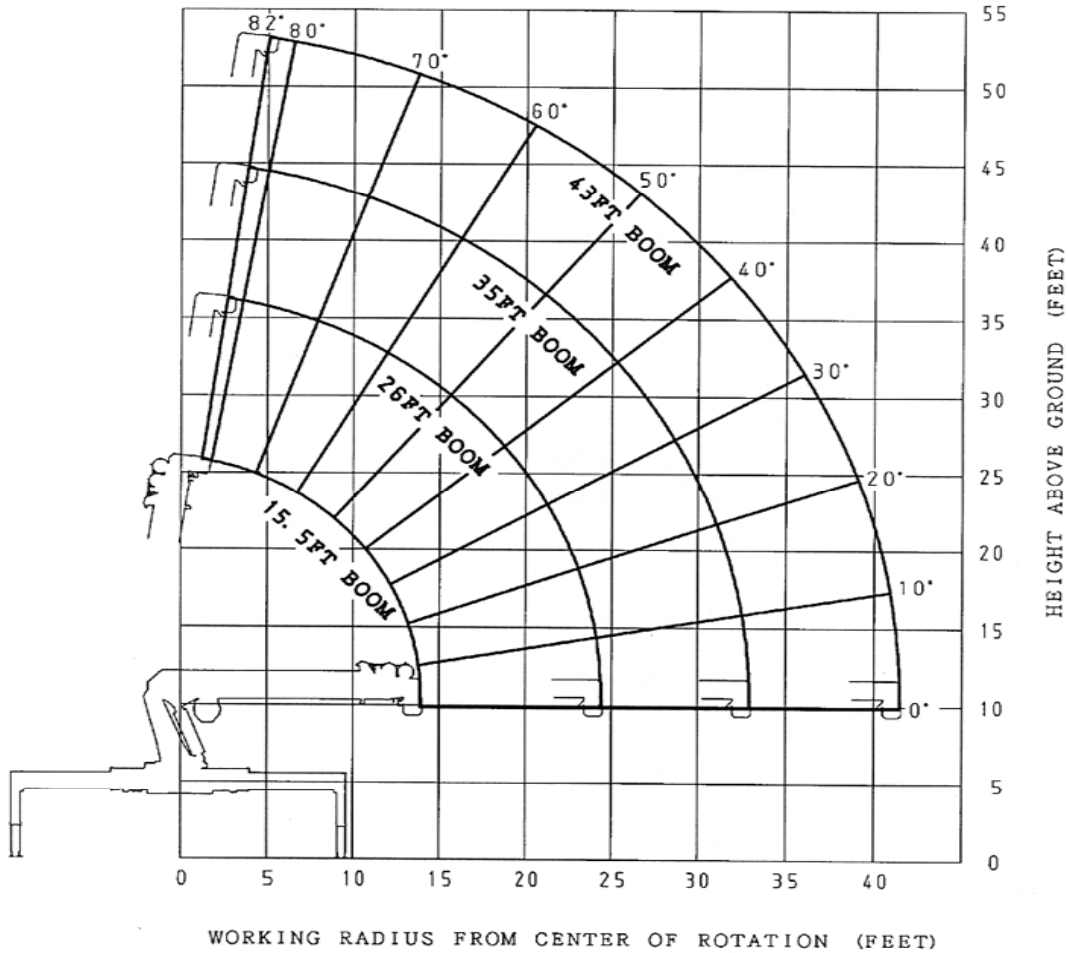
Rear Mounts Behind the Cab Mounts Tractor Mounts Trailer Mounts

Specifications Subject to Change without Notice

FURUKAWA UNIC PRODUCTS FOR NORTH AMERICA

Crane Capacity	
Maximum Lift Capacity	30,000 @ 4.0 feet with Four Part Line
Work Radius	Minimum 3.0 feet to Maximum to 41.4 feet
Boom Length	43 feet
Tip Height	54 feet. With Two Stage Jib 78 feet
Boom Design	Four (4) Section Box Beam Telescoping, Keel Top and Bottom with Angle Indicator.
Boom Length	15.5 feet to 43 feet
Boom Extending Speed	27.6 feet / 34 seconds.
Boom Lifting Cylinder Design	Double Acting Type with Counterbalance Valve.
Boom Travel Position	Preferred Forward Over the Cab or Rear Over the Body.
Boom Raising Speed	-10° to 82° / 16.2 seconds.
Winch Design	Hydraulic Motor Driven, Planetary Gear Reduction, with Automatic Mechanical Brake and Counterbalance Valve.
Single Line Pull	9,500 lbs. at first layer
Hoisting Speed Single Line (Low)	128 feet / minute @ 3rd Layer.
Hoisting Speed Single Line (High)	256 feet / minute @3 rd Layer
Hydraulic Motor	Axial Plunger Type.
Wire Rope Construction	IWRC 6xWS(31) ^L
Diameter x Length	9/16 inch x 203 feet
Breaking Strength	33920 lbs.
Swing Design	Hydraulic Motor Driven, Worm and Spur Gears Reduction, Worm Self-Locking Brake.
Swing Range	360° Continuous Rotation on Ball Bearing. Non-Stop.
Hydraulic Motor	Trochoid Type
Swing Speed	1.4 rpm.
Outrigger Design	Out & Down Style. Full Hydraulic Power Horizontal and Vertical Travel. Pilot Operated Check Valves.
Main Outrigger Spans	Retracted 7.4 feet. Extension 18.7 feet
Auxiliary Outrigger Spans	Behind Cab Under Frame Retracted 7.4 ft. Extended 11.5 ft.
Auxiliary Outrigger Spans	Rear Mount Over Frame Retracted 7.4 ft. Extended 18.7 ft.
Hydraulic System	75 Gallon Oil Tank
Control Valves	Multiple Control Valves, Spring Centered Spool-Type with Pressure Relief Valve.
System Operating Pressure	2850 PSI (All Functions)
Hydraulic Pump	Three Sections
System Flows	Winch: 26.4 GPM – Boom – 26.4 GPM – Swing – 12.7 GPM
Operating Weight	9105 lbs.
Safety Devices	Capacity Alert System, ATB System, Outrigger Motion. Alarm

RANGE DIAGRAM:



Note : Boom Deflections Not Shown.

AVAILABLE OPTIONS

- One Man Steel Basket
- Two Man Steel Basket
- 24 ft. Two Stage Jib
- Load Blocks (One & Two Sheaves)
- Radio Remote Control System

Working Radius	B O O M L E N G T H			
	15.5 feet	26 feet	35 feet	43 feet
Feet	LBS.	LBS.	LBS.	LBS.
4	30,000	14,500		
5	24,000	14,500	11,000	
8	16,500	14,500	11,000	11,000
10	14,000	14,500	11,000	11,000
12	11,000	11,500	11,000	11,000
15		9,400	9,500	9,500
20		6,800	7,000	7,000
25			5,500	5,700
30			4,000	4,700
35				3,700
40				2,100

Boom Angle Zero Degrees	5,500	2,800	1,700	1,100
Work Radius	13.9'	24.4'	32.9'	41.4'

CAUTION

1. Fully extend all outriggers on solid, level surface leveling vehicle.
2. Rated loads shown in the chart are based on the crane strength rather than stability.
3. Rated loads shown must be reduced in accordance with vehicle weight and loaded condition of truck, crane-mounting position, wind, ground condition and operating speed.
4. The weights of hook (Single Line Hook: 110 lbs., Two (2) Part Load Block 135 lbs., Four (4) Part Load Block 146 lbs., Slings, and any accessories attached to the boom load line must be deducted from the above rated loads in the chart.
5. The wire rope load line used on this crane has specific load limitations, as follows:

One Single Line	Two Part Line	Three Part Line	Four Part Line
Maximum Load 9,500 lbs.	Maximum Load 19,000 lbs.	Maximum Load 28,500 lbs.	Maximum Load 30,000 lbs.

In Accordance with Furukawa UNIC Policy of Constant Product Improvement, all Specifications are Subject to Change without Notice or Obligations.