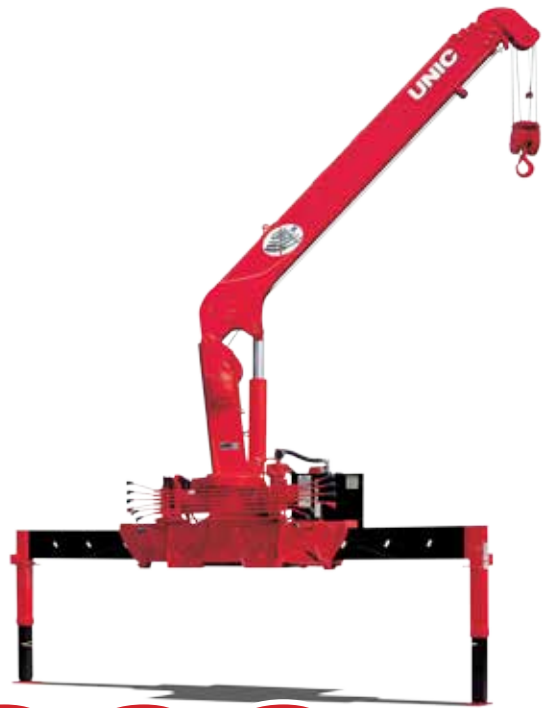


UNIC
UR-V374
TRUCK-MOUNTED CRANE



8,000 lbs
MAXIMUM LIFT CAPACITY

32.8ft
BOOM LENGTH

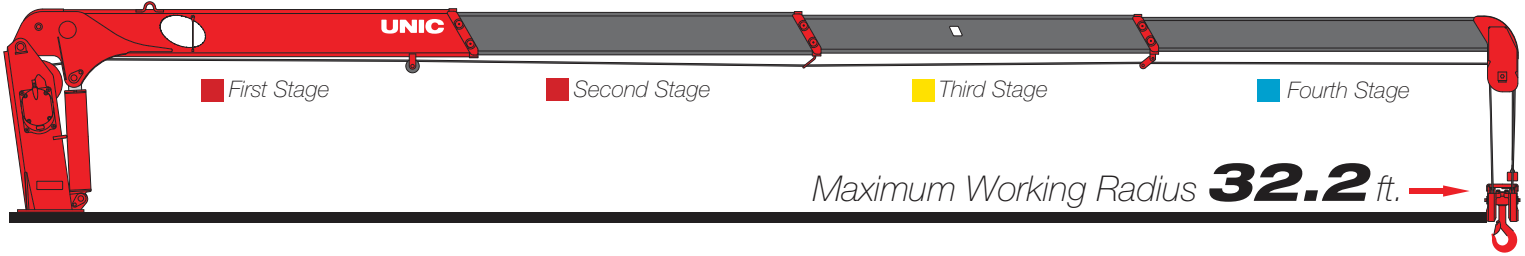
41ft
TIP HEIGHT

**BEHIND
THE CAB
OR REAR**
MOUNTING OPTIONS

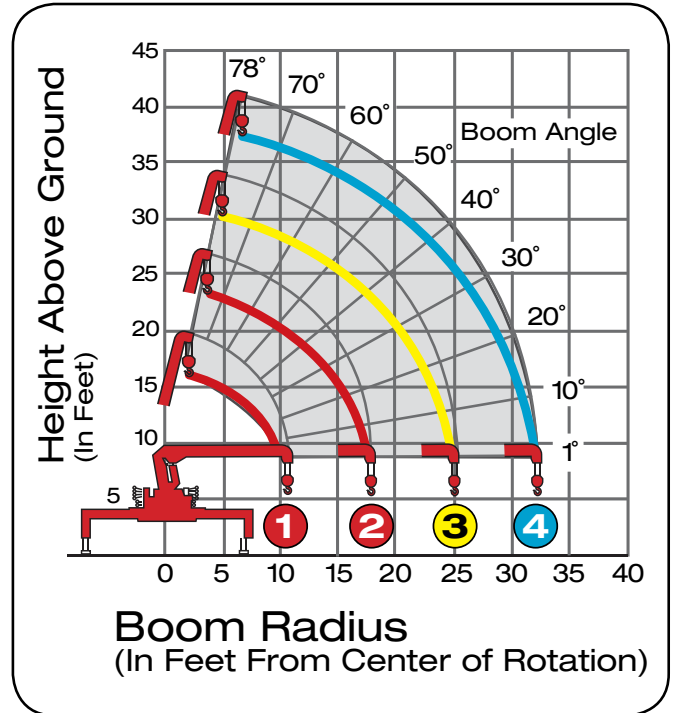


**REMOTE CONTROL
OPTION AVAILABLE**

4-Section Boom



Model UR-V374 Telescopic Boom Design	
Maximum Lift Capacity	8,000lbs @ 6.6ft
Lift Capacity - 10.5ft	4,710lbs
Lift Capacity - 18ft	2,610lbs
Lift Capacity - 32.4ft	1,060lbs
Tip Height	41ft
Working Radius	2.20ft to 32.2ft
Boom Length	11.2ft to 32.8ft
Boom Sections	Four (4)
Swing Rotation	360° Continuous
Out & Down Outriggers	Two (2)
Operating Weight	2,520 lbs
Minimum Chassis	18,000 GVWR



Boom Radius	6.6ft	8.2ft	8.8ft	9.8ft	10.5ft	11.5ft	13.1ft	14.8ft	16.4ft	18ft	19.7ft	21.3ft	23ft	26.2ft	29.5ft	32.4ft
1st Stage	8000	8000	6700	5810	4710											
2nd Stage	8000	6700	5810	5150	4820	4380	3720	3280	2830	2610						
3rd Stage		5150	5150	4710	4490	3820	3160	2720	2390	2170	1950	1770	1620	1500		
4th Stage							2280	2060	1820	1720	1620	1500	1400	1240	1100	1060



800.452.5011
smileyliftingsolutions.com

NATIONWIDE RENTALS | SALES | SERVICE
FINANCING AVAILABLE