

UNIC
UR-V373
TRUCK-MOUNTED CRANE



8,000 lbs
MAXIMUM LIFT CAPACITY



25.3 ft
BOOM LENGTH

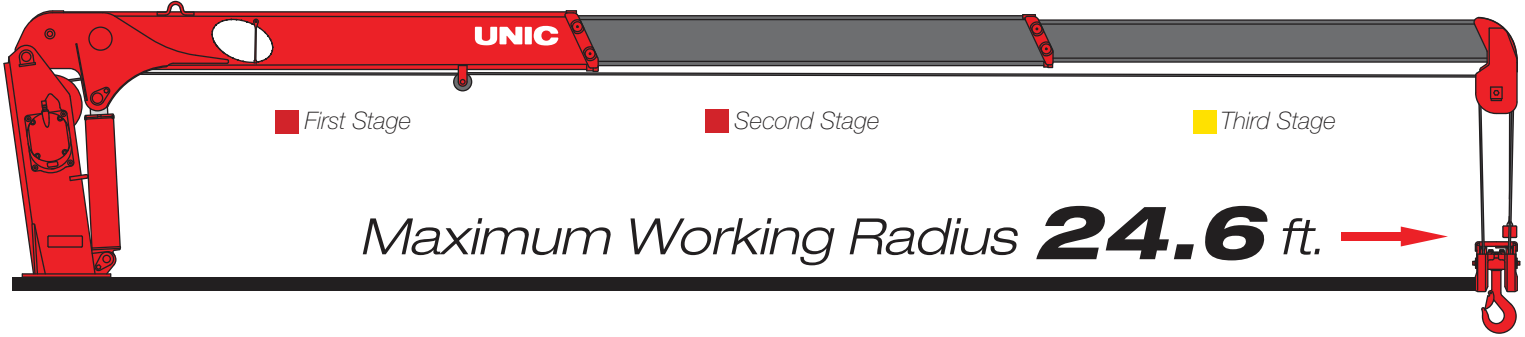
34 ft
TIP HEIGHT

**BEHIND
THE CAB
OR REAR**
MOUNTING OPTIONS



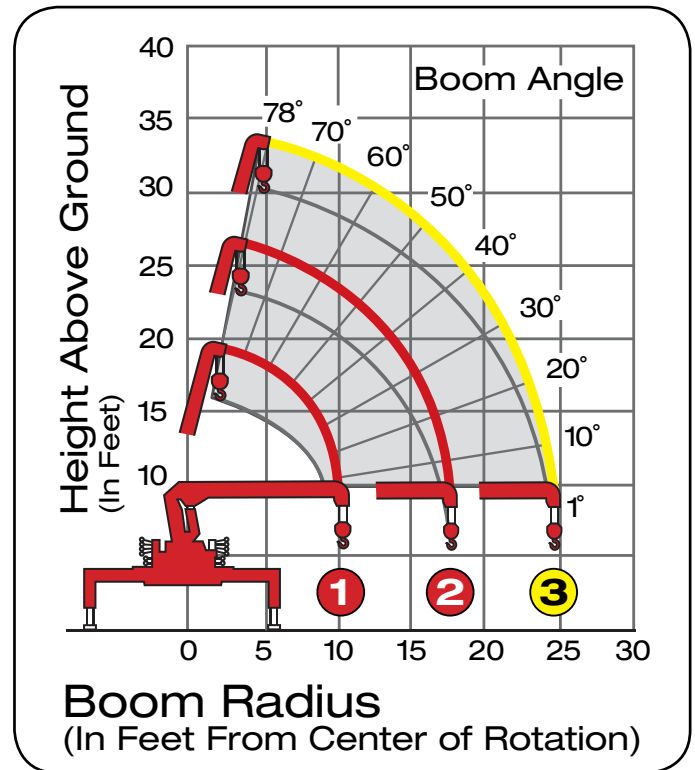
**REMOTE CONTROL
OPTION AVAILABLE**

3-Section Boom



Model URV373 Telescopic Boom Design

Maximum Lift Capacity	8,000lbs @ 6.5ft
Lift Capacity - 10ft	5,150lbs
Lift Capacity - 20ft	2,060lbs
Lift Capacity - 24.6ft	1,500lbs
Tip Height	34ft
Working Radius	2.13ft to 24.6ft
Boom Length	10.86ft to 25.3ft
Boom Sections	Three (3)
Swing Rotation	360° Continuous
Out & Down Outriggers	Two (2)
Operating Weight	2,280lbs
Minimum Chassis	17,500 GVWR



Boom Radius	6.5ft	8.2ft	8.9ft	10ft	10.5ft	11ft	13ft	15ft	16ft	18ft	20ft	21ft	23ft	24.6ft
1st Stage	8000	6700	6700	5480	5150									
2nd Stage	8000	6700	6700	5480	5040	4490	3820	3380	2940	2830				
3rd Stage		5150	5150	4710	4490	3930	3270	2830	2500	2280	2060	1830	1620	1500



800.452.5011
smileyliftingsolutions.com

NATIONWIDE RENTALS | SALES | SERVICE
FINANCING AVAILABLE