

UNIC
UR-V375
TRUCK-MOUNTED CRANE



8,000 lbs
MAXIMUM LIFT CAPACITY

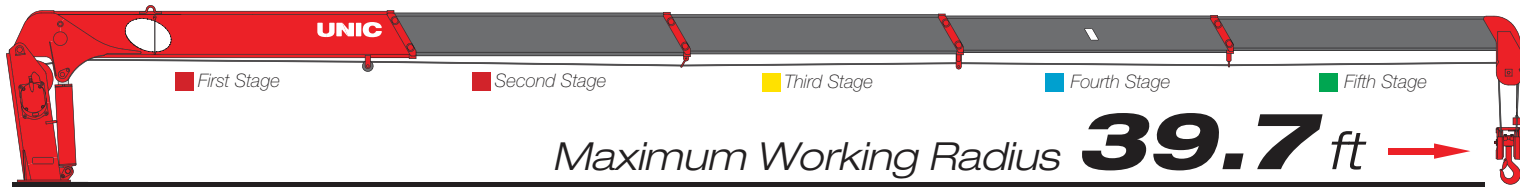
40.3ft
BOOM LENGTH

48ft
TIP HEIGHT

**BEHIND
THE CAB
OR REAR**
MOUNTING OPTIONS

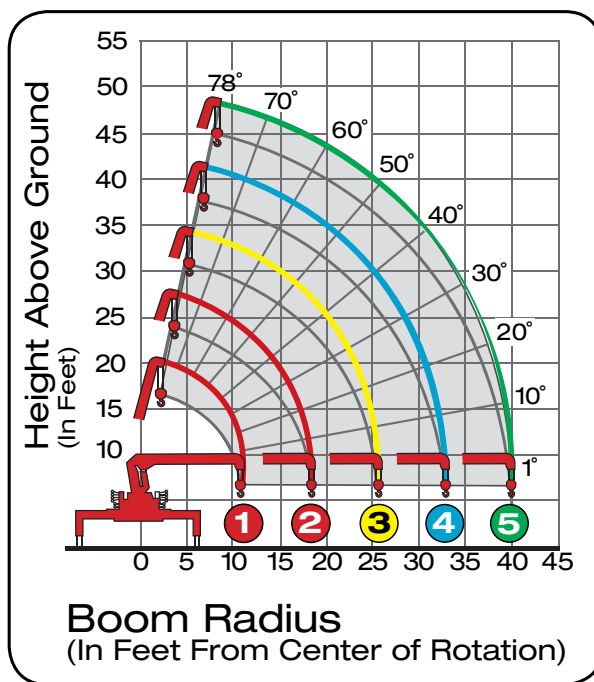


**REMOTE CONTROL
OPTION AVAILABLE**



Model UR-V375 Telescopic Boom Design

Maximum Lift Capacity	8,000lbs @ 7.9ft
Lift Capacity - 10.5ft	4,820 lbs
Lift Capacity - 18ft	2,610lbs
Lift Capacity - 39.7ft	550 lbs
Tip Height	48 ft
Working Radius	2.3ft to 39.7ft
Boom Length	11.61ft to 40.3ft
Boom Sections	Five (5)
Swing Rotation	360° Continuous
Out & Down Outriggers	Two (2)
Operating Weight	2,700lbs
Minimum Chassis	18,000 GVWR



Boom Radius	6.6ft	7.9ft	8.2ft	8.8ft	9.8ft	10.5ft	11.5ft	13.1ft	14.8ft	16.4ft	18ft	19.7ft	21.3ft	23ft	26.2ft	29.5ft	32.8ft	36.1ft	39.7ft	
1st Stage	8000	8000	6700	5810	5150	4710														
2nd Stage	8000	8000	6700	5810	5150	4820	4380	3720	3280	2830	2610									
3rd Stage			5150	5150	4710	4490	3820	3160	2720	2390	2170	1950	1770	1610	1500					
4th Stage								2280	2060	1830	1720	1620	1500	1390	1240	1100	1060			
5th Stage									1680	1390	1220	1060	970	880	770	690	620	550	550	



800.452.5011
smileyliftingsolutions.com

NATIONWIDE RENTALS | SALES | SERVICE
FINANCING AVAILABLE