

UNIC
UR-V505

UNIC UR-V505

TRUCK-MOUNTED CRANE



10,000 lbs
MAXIMUM LIFT CAPACITY



35.6ft | **42ft**
BOOM LENGTH | TIP HEIGHT

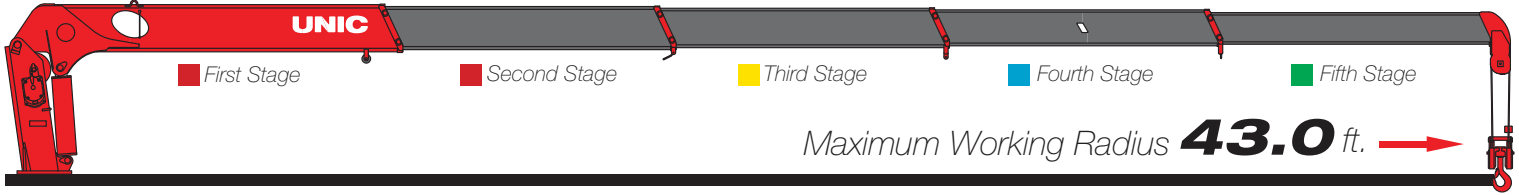
**BEHIND
THE CAB
OR REAR**
MOUNTING OPTIONS



**REMOTE CONTROL
OPTION AVAILABLE**

UNIC UR-V505

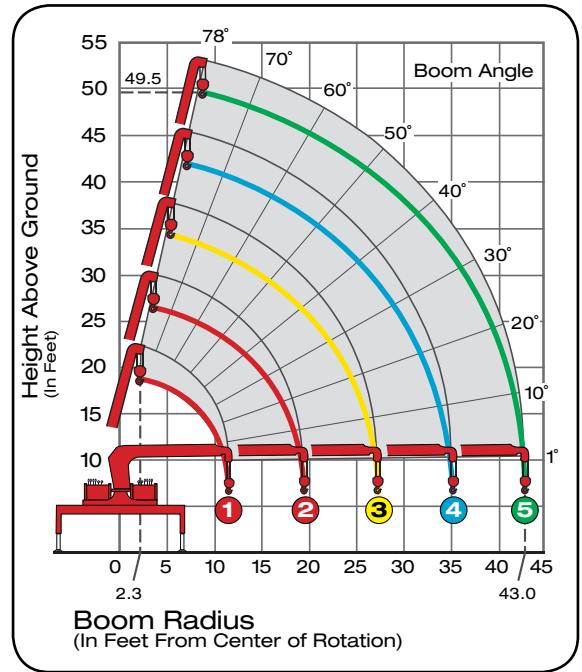
5-Section Boom



Maximum Working Radius **43.0 ft.** →

Model UR-V505 Performance Specs

Maximum Lift Capacity	10,000lbs @ 7.4ft
Lift Capacity - 11.5ft	6,700 lbs
Lift Capacity - 19.4ft	3,700 lbs
Lift Capacity - 27.2ft	2,400 lbs
Lift Capacity - 35.1ft	1,600 lbs
Lift Capacity - 43ft	1,100 lbs
Tip Height	53ft
Working Radius	2.3ft to 43ft
Boom Length	12.3ft to 43.8ft
Boom Sections	Five (5)
Swing Rotation	360° Continuous
Out & Down Outriggers	Two (2)
Operating Weight	3,680 lbs
Minimum Chassis	26,000 GVWR



Boom Radius	7ft	7.4ft	8ft	9ft	10ft	11.5ft	12.8ft	14ft	14.8ft	16.4ft	18ft	19.4ft	22ft	25ft	27.2ft	31ft	35.1ft	39ft	43ft	
1st Stage	10000	10000	9200	8200	7400	6700														
2nd Stage	10000	10000	9200	8200	7400	6700	6300	5850	5300	4700	4150	3700								
3rd Stage					6700	6700	6300	5850	5300	4700	4150	3700	3100	2650	2400					
4th Stage								4500	4500	4000	3600	3300	2900	2400	2150	1850	1600			
5th Stage										2950	2950	2600	2400	2150	1900	1750	1500	1300	1200	1100



800.452.5011
smileyliftingsolutions.com

NATIONWIDE RENTALS | SALES | SERVICE
FINANCING AVAILABLE