

UNIC
UR-V506

UNIC UR-V506

TRUCK-MOUNTED CRANE



8,000 lbs
MAXIMUM LIFT CAPACITY



47.4ft | **60ft**
BOOM LENGTH | TIP HEIGHT

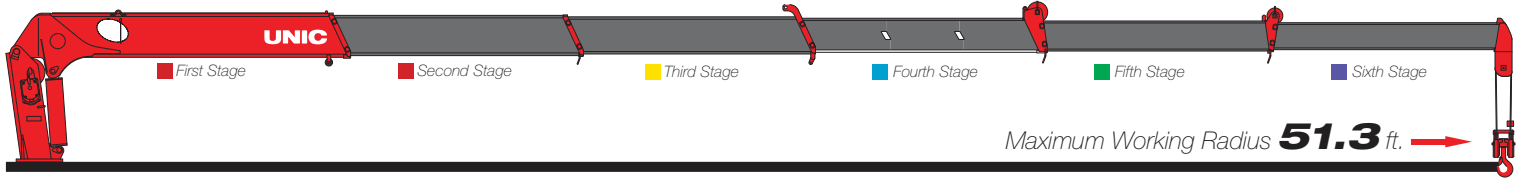
**BEHIND
THE CAB
OR REAR**
MOUNTING OPTIONS



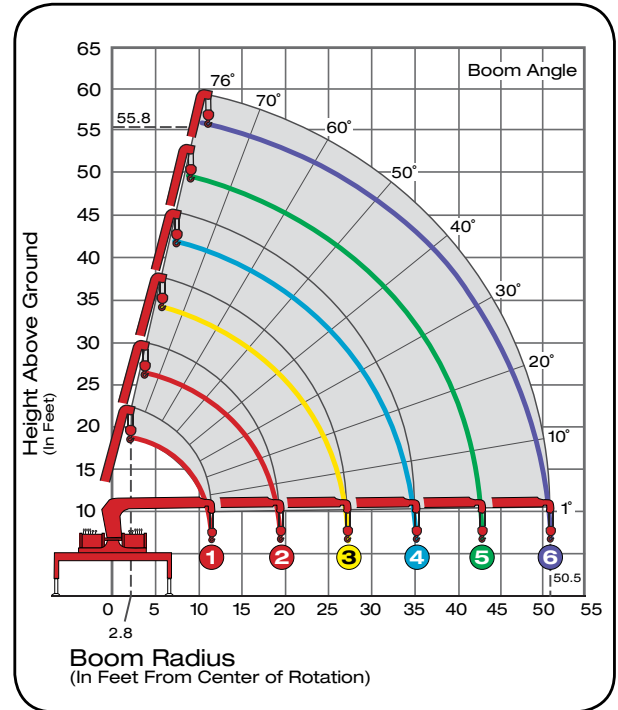
**REMOTE CONTROL
OPTION AVAILABLE**

UNIC UR-V506

6-Section Boom



Model UR-V506 Performance Specs	
Maximum Lift Capacity	10,000lbs @ 7.4ft
Lift Capacity - 19.4ft	6,300 lbs
Lift Capacity - 27.2ft	2,400 lbs
Lift Capacity - 18ft	3,700 lbs
Lift Capacity - 50.5ft	500 lbs
Tip Height	60ft
Working Radius	2.8ft to 51.3ft
Boom Length	12.7ft to 47.4ft
Boom Sections	Six (6)
Swing Rotation	360° Continuous
Out & Down Outriggers	Two (2)
Operating Weight	4,100lbs
Minimum Chassis	25,999 GVWR



Boom Radius	8ft	9ft	10ft	12ft	13ft	14ft	16ft	18ft	20ft	23ft	27.5ft	30ft	32ft	35.5ft	40ft	43ft	50.7ft
1st Stage	8000	8000	7500	6800													
2nd Stage	8000	8000	7500	6800	6500	5800	4800	4100	3500								
3rd Stage			6700	6700	6500	5800	4800	4100	3500	2900	2300						
4th Stage					4500	4500	4100	3600	3200	2700	2100	1900	1800	1600			
5th Stage						2900	2900	2600	2400	2100	1700	1600	1500	1300	1200	1100	
6th Stage							1200	1200	1200	1000	800	800	700	700	600	600	500



800.452.5011
smileyliftingsolutions.com

NATIONWIDE RENTALS | SALES | SERVICE
FINANCING AVAILABLE