



# SPYDERCRANE<sup>®</sup>

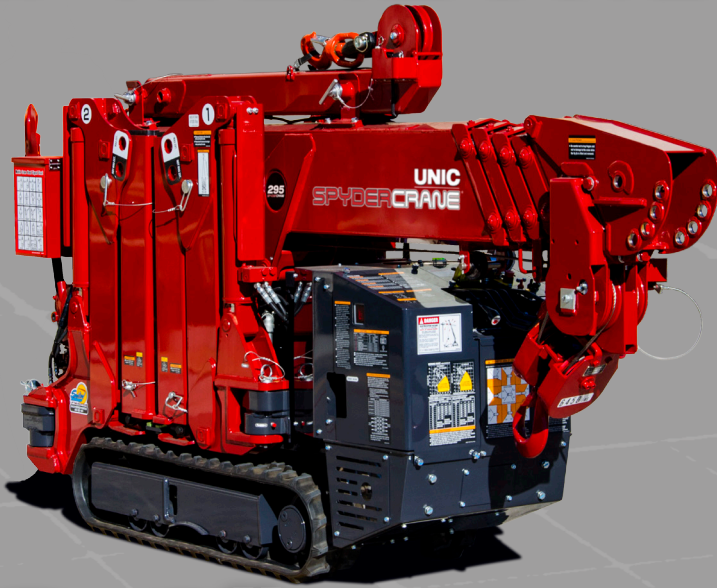
## URW095 SERIES

### MINI-CRAWLER CRANE

# WHAT IS A SPYDERCRANE® ?

A SPYDERCRANE Mini-Crawler is a mini-crane that has been designed and built for working in low access confined areas either indoors or outdoors. It is mounted on a dual track chassis with "spider-type" legs for its outriggers.

SPYDERCRANES are revolutionizing many industries by offering a flexible and versatile crane that while strong enough to lift up to 6.6 tons\*, can be used where a conventional truck mounted crane or carry-deck crane will not have access due to its size.



**24"** when stored  
wide in travel mode



As the North American Distributor of SPYDERCRANES, Smiley Lifting Solutions has a wide range of mini-crawler cranes available. Whether your jobs are small or large, there is a SPYDERCRANE model that is the perfect fit. With a wide range of engine types and accessories available, we can provide you with a SPYDERCRANE to fit your exact needs.

\* Based on specifications of the URW706 SPYDERCRANE

**31ft**  
Tip Height

**1,990**  
lbs Capacity



**U-WAVE**  
Wireless Radio  
Remote Control

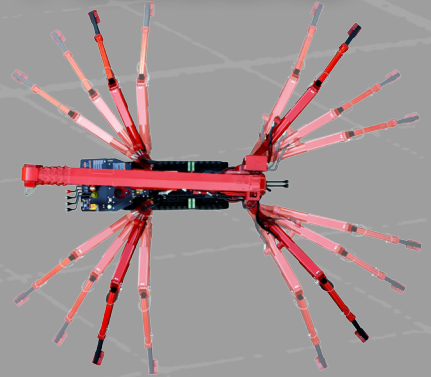
# LOAD CHARTS

## LOAD CHART

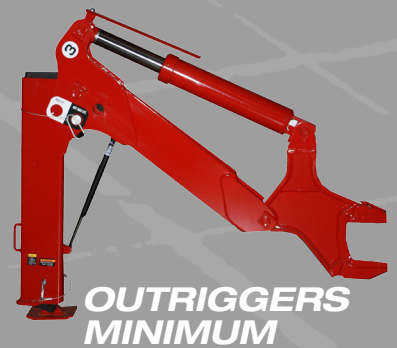
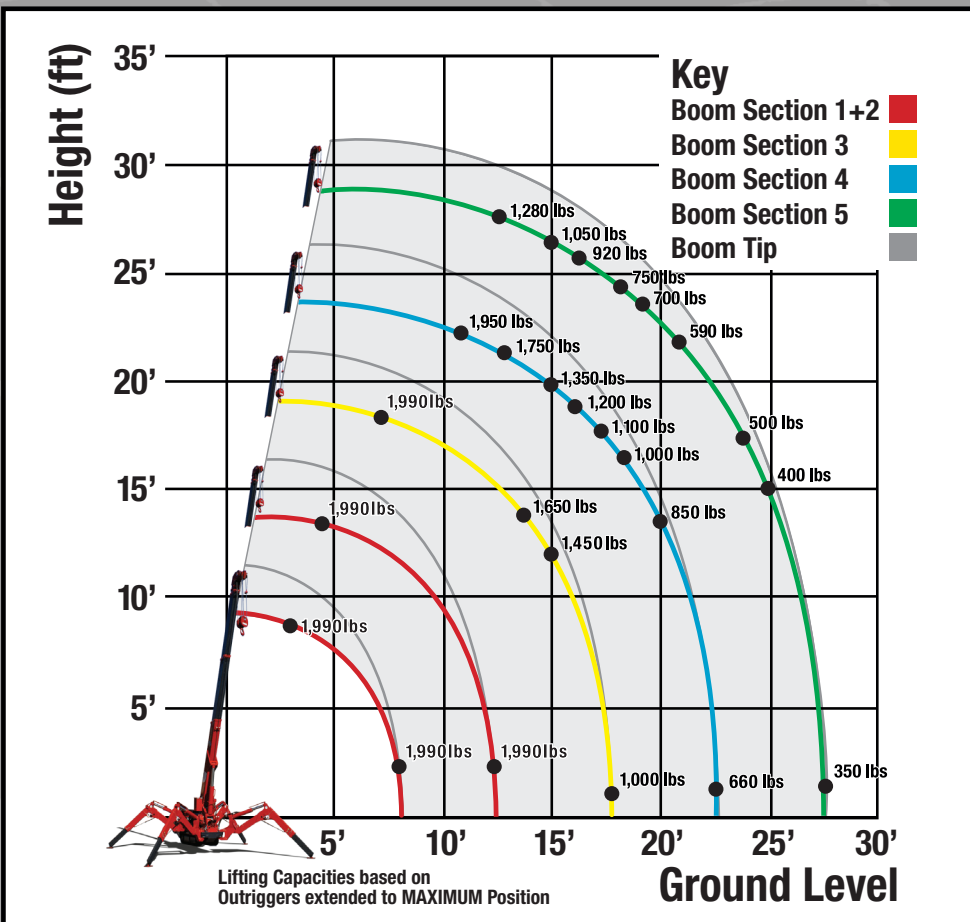
Lifting capacity varies depending on outrigger configuration and boom length and angle.

BOOM SECTION 1 EXTENDED   BOOM SECTION 1 + 2 EXTENDED										
Working Radius (ft.)	3	4.5	5	6	7	8	10	11	12.58	
Outriggers Maximum (lbs.)	1,990	1,990	1,990	1,990	1,990	1,990	1,990	1,990	1,990	
Outriggers Minimum (lbs.)	1,990	1,990	1,990	1,990	1,990	1,600	1,100	950	600	
BOOM SECTION 1 + 2 + 3 EXTENDED										
Working Radius (ft.)	7	8	9.5	10	11	12	14	15	17.62	
Outriggers Maximum (lbs.)	1,990	1,990	1,990	1,990	1,990	1,950	1,650	1,450	1,000	
Outriggers Minimum (lbs.)	1,850	1,550	1,250	1,150	1,000	780	600	550	300	
BOOM SECTION 1 + 2 + 3 + 4 EXTENDED										
Working Radius (ft.)	11	12.5	13	15	16	17	18	20	22.61	
Outriggers Maximum (lbs.)	1,950	1,950	1,750	1,350	1,200	1,100	1,000	850	660	
Outriggers Minimum (lbs.)	1,000	800	750	600	510	450	370	280	200	
BOOM SECTION 1 + 2 + 3 + 4 + 5 EXTENDED										
Working Radius (ft.)	12.5	13.5	15	16	18	19	21	23	25	27.59
Outriggers Maximum (lbs.)	1,280	1,280	1,050	920	750	700	590	500	400	350
Outriggers Minimum (lbs.)	850	700	600	530	420	380	300	220	180	130







**52**  
Possible  
Outrigger  
Positions



## WORKING RADIUS



# SPECIFICATIONS

	URW095CP1URS & URW095CP1URS/P	URW095CP1UMRS & URW095CP1UMRS/P	URW095CP1UBRS	URW095C4URS	URW095C4UMRS
<b>Engine / Motor</b>	 	  		<b>DIESEL</b>	<b>DIESEL</b> <b>Electric</b>
<b>Engine Manufacturer:</b>	Mitsubishi (Gas)	Mitsubishi (Gas)	DC	Kubota	Kubota (Diesel)
<b>Maximum Output:</b>	Gasoline - 13HP Propane - 11.7HP	Gasoline - 13HP Propane - 11.7HP Electric - 5HP/220V (Single Phase)	48V Battery 110V Electric	7.2kw	Diesel - 7.2kw Electric - 5HP/220V (Single Phase)
<b>Tank Capacity:</b>	1.85 gal	1.85 gal		2.7 gal	2.7 gal
<b>Starting Method</b>	Electric and Recoil Start as Standard		N/A	Electric Start	
<b>Crane Capacity</b>	1,990 lbs @12.5 ft				
<b>Max Working Radius</b>	1.4 - 28.0 ft				
<b>Tip Height</b>	31 ft (37 ft with Jib)				
<b>Turning Radius</b>	Turns within its dimensions				
<b>Dimensions when Folded (ft.)</b>	2.0 x 4.6 x 9.0 (W x H x L)			2.0 x 4.6 x 9.1 (W x H x L)	2.0 x 4.6 x 9.0 (W x H x L)
<b>Weight</b>	4,200 lbs	4,380 lbs	4,360 lbs	4,245 lbs	4,425 lbs
<b>Outrigger Point Loading</b>	152.2 psi on standard outrigger pads (7" x 4.5") (Specific point landing available upon request)				
<b>Hook Speed</b>	Capacity: 1,955 lbs. at 4th layer   2-Part-Line				
	65 ft/min at 4th layer	65 ft/min at 4th layer Electric: 52 ft/min at 4th layer	60 ft/min at 4th layer	65 ft/min at 4th layer	65 ft/min at 4th layer Electric: 52 ft/min at 4th layer
<b>Telescopic System</b>	Boom Length: 8.3 ft (retracted) to 28.4 ft (extended) Boom Type: 5-Section hydraulically telescoping boom, with hexagonal box construction				
<b>Telescoping Speed</b>	20 ft / 20 seconds				
<b>Boom Lift Speed</b>	0° - 78° / 11 sec	Gas: 0° - 78° / 11 sec Electric: 0° - 78° / 15 sec	0° - 78° / 15 sec	0° - 78° / 11 sec	Diesel: 0° - 78° / 11 sec Electric: 0° - 78° / 15 sec
<b>Traction System</b>	Travel Speed: 0-1.43 mph				
	Gradability: 20°				
	Track Ground Pressure: 6.96 psi				
<b>Accessories &amp; Options</b>	<ul style="list-style-type: none"> <li>• SPYDERWEB 5-Axis fixed Glass Manipulator - Attaches directly to boom for rigid application</li> <li>• 6 ft offsettable Jib with Searcher Hook and Single-Line Swivel Ball</li> <li>• Custom SPYDERCRANE Trailer - Includes Track Mats, Tool Box, Outrigger Pads and Fuel Containers</li> </ul>		<ul style="list-style-type: none"> <li>• Auxilliary Winch Kit - 1,990 lb Single-Line Pull, 330 ft., 5/16" Wire Rope, 90 FPM at 6th Layer</li> <li>• MYLAR Non-Marking Tracks</li> <li>• Single-Part Reeving and Two-Part Reeving capability</li> </ul>		



5326 W. Mohave St | Phoenix, AZ 85043  
844.264.8994 | 602.442.4000

Visit us on the web at [SmileyLiftingSolutions.com](http://SmileyLiftingSolutions.com)

Product specifications are subject to change without notice. No specific training or license is required to operate the SPYDERCRANE in most areas, but operators are responsible for knowing and meeting all safety requirements and regulations.

URW095 Spec Sheet - July 2017