

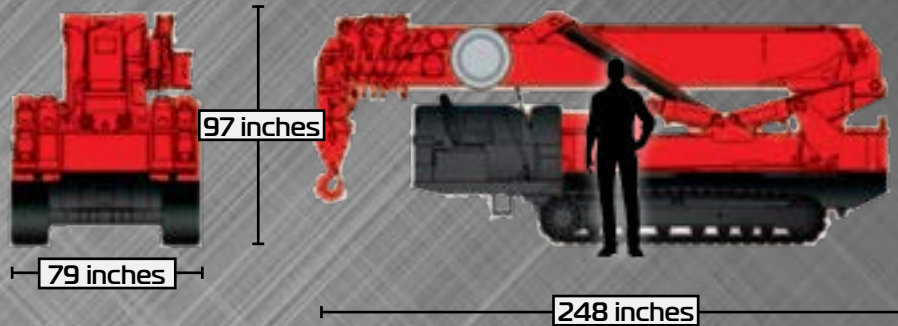
URW1006 Mini-Crawler

Pick-&-Carry
Capable

104-Ft
Tip Height

Multiple
Power
Options

22,046 lbs
at 9.8 feet

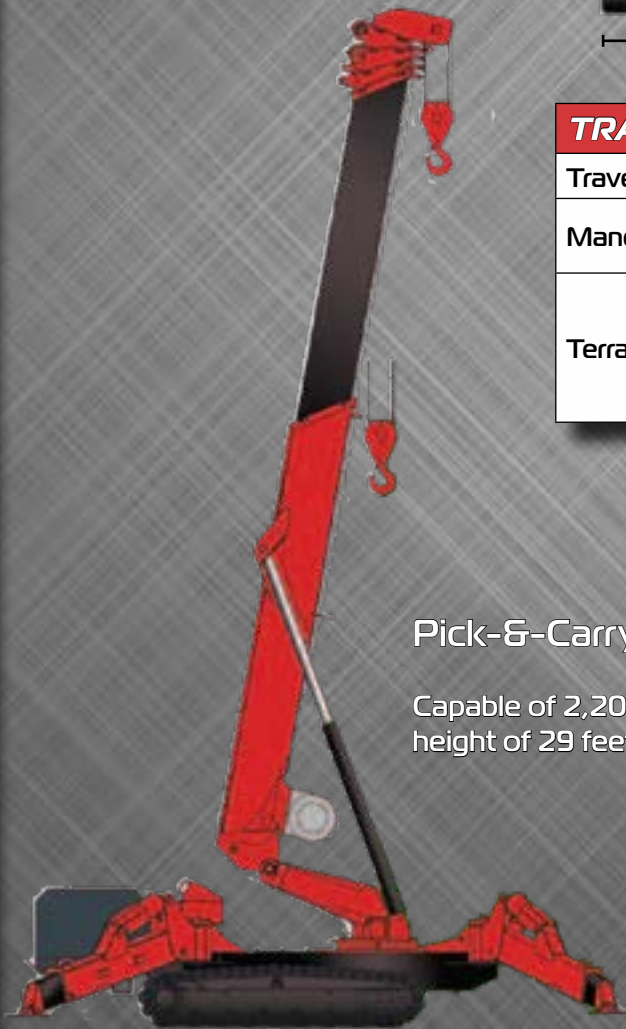


TRAVEL DIMENSIONS, WEIGHTS, AND PERFORMANCE

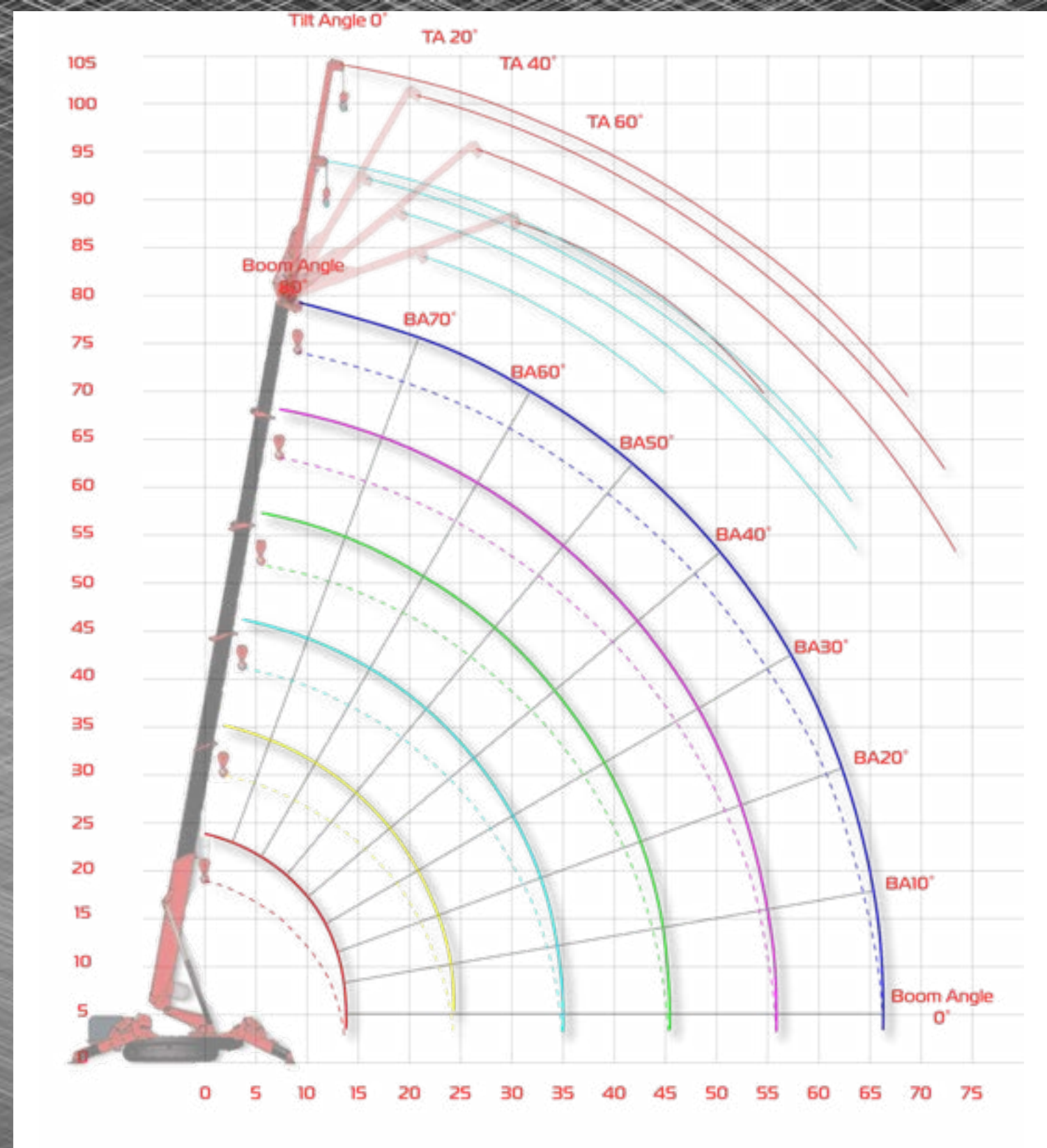
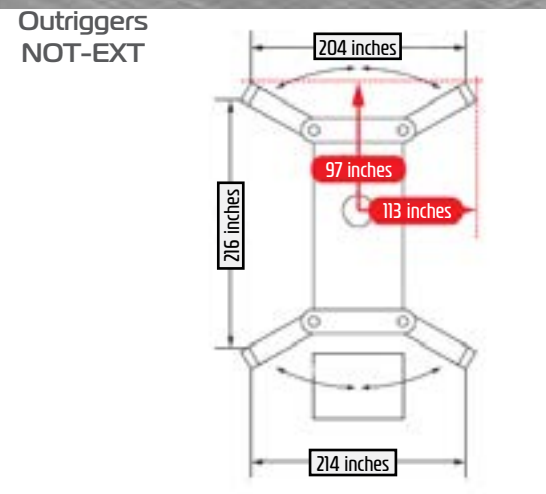
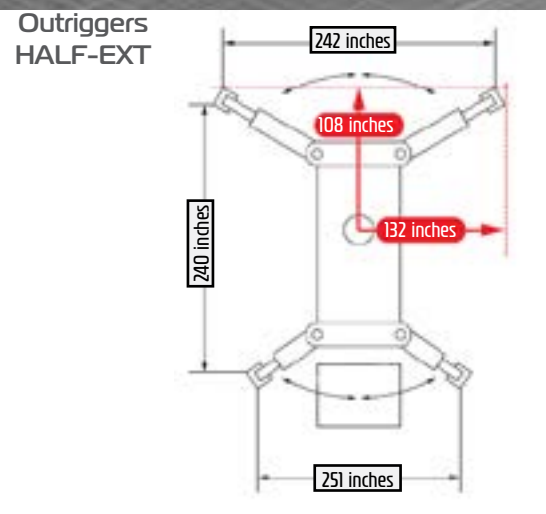
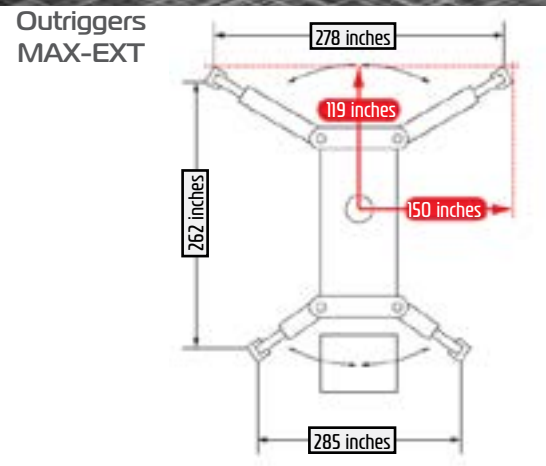
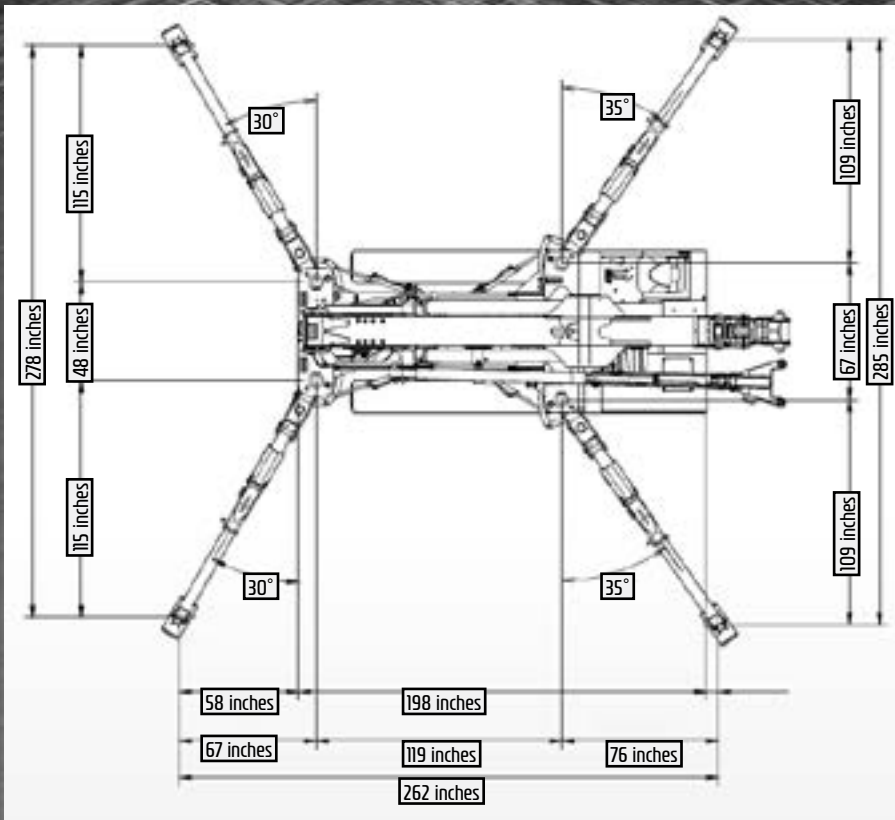
Travel Angle Limits	fore-and-aft	23°	side-side (pavement/soft earth)	20°/10°
Maneuverability	Travels using skid-steer system, capable of making 360° of turn within own length			
Terrain Limits	Continuous steel-core rubber track with 40mm lugs; capable of traveling over all terrain but optimized for soft-earth			
	Capable of mounting/traversing obstacles of up to six-inches in height without the use of ramps			

Pick-&-Carry Mode

Capable of 2,200 lbs capacity at a 6 ft working range with a hook height of 29 feet



Conform Your SPYDERCRANE's Outrigger Deployment to the workspace



OUTRIGGER DEPLOYMENT DIMENSIONS

Deployment Footprint	Maximum-Extended (MAX-EXT)	Length	262 inches
		Width	285 inches
	Halfway-Extended (HALF-EXT)	Length	240 inches
Width	251 inches		
Not-Extended (NOT-EXT)	Length	216 inches	
	Width	214 inches	

INCLUDED ACCESSORIES

Multiple Hook Blocks	4-Part Hook Block for maximum lifting capacity and 1-Part Hook Block for maximum lifting height/speed
Tool Kit	Selection of hand tools and included storage bag; everything needed to perform routine service and maintenance
Tilt Jib	Compatible with 1-Part Hook Block and Searcher Hook; recovers working radius lost at high boom angles
Remote Controller	RF-based handheld allows remote operation of outriggers and upperworks from up to 330 feet away

Line Color	Solid	Dash
Red	Boom Stage 1	Stage 1 Hook Height
Yellow	Boom Stage 2	Stage 2 Hook Height
Cyan	Boom Stage 3	Stage 3 Hook Height
Green	Boom Stage 4	Stage 4 Hook Height
Magenta	Boom Stage 5	Stage 5 Hook Height
Blue	Boom Stage 6	Stage 6 Hook Height

Line Color	Dash
Cyan	Jib Stage 1
Red	Jib Stage 2

URW1006 Mini-Crawler

SPYDERCRANE

SPYDERCRANE

URW1006 Mini-Crawler

Rated Load Chart (Boom)											
	Deployment State	Working Radius (feet)									
		8	9.8	10	11	13	14	15			
BOOM STAGE 1	MAX-EXT	22350	22350	22000	19760	16750	14510	12210			
	HALF-EXT	22350	22350	22000	18750	15390	13640	11770			
	NOT-EXT	22350	22350	21930	17920	14160	12760	11330			
BOOM STAGE 2		8	9.8	11	13	14	17	20	23	26.5	
	MAX-EXT	22350	22350	19760	16780	15440	12220	9490	7550	4930	
	HALF-EXT	22350	22350	18640	15760	14320	11390	8610	6670	4270	
	NOT-EXT	22350	22350	17900	14340	13130	9500	7080	5350	3500	
BOOM STAGE 3		13	16	20	23	26	30	33	37.9		
	MAX-EXT	12950	10910	8490	6900	5360	3880	3350	2510		
	HALF-EXT	12950	10910	8480	6570	4910	3560	2790	2070		
	NOT-EXT	12950	10510	7690	5680	4130	2790	2130	1340		
BOOM STAGE 4		16.5	20	23	26	33	36	39	43	46	49.3
	MAX-EXT	8650	7470	6580	5670	3670	3080	2440	2030	1840	1630
	HALF-EXT	8650	7470	6580	5670	3670	2860	2290	1800	1510	1190
	NOT-EXT	8640	7230	6020	4920	2800	2190	1670	1190	850	520
BOOM STAGE 5		20	26	33	39	46	49	53	56	59	60.6
	MAX-EXT	6410	5200	3910	2880	2060	1750	1480	1280	1080	970
	HALF-EXT	6410	5200	3910	2880	1860	1560	1210	970	770	660
	NOT-EXT	6390	4770	3190	2130	1330	1070	720	440		
BOOM STAGE 6		26	33	39	46	53	59	65	71.9		
	MAX-EXT	4750	3690	2880	2170	1810	410	1000	630		
	HALF-EXT	4750	3690	2880	2010	1290	810	510			
NOT-EXT	4750	3460	2440	1570	960	550					

Jib Stage 1							
Tilt	Deployment State	BA80°	BA70°	BA60°	BA50°	BA40°	BA30° - BA0°
0°	MAX-EXT	2310	2310	2200	1650	720	Prohibited Zone
	HALF-EXT	2310	2310	2200	1030	550	
	NOT-EXT	2310	2310	1650	770		
20°	MAX-EXT	1980	1980	1650	1250	660	
	HALF-EXT	1980	1980	1650	990	550	
	NOT-EXT	1980	1980	1430	700		
40°	MAX-EXT	1650	1650	1270	990	550	
	HALF-EXT	1650	1650	1270	990	500	
	NOT-EXT	1650	1650	1270	590		
60°	MAX-EXT	1450	1450	1160			
	HALF-EXT	1450	1450	1160			
	NOT-EXT	1450	1450	1160			

Jib Stage 2							
Tilt	Deployment State	BA80°	BA70°	BA60°	BA50°	BA40°	BA30° - BA0°
0°	MAX-EXT	2310	2310	1800	1250	550	Prohibited Zone
	HALF-EXT	2310	2310	1650	880	390	
	NOT-EXT	2310	2310	1430	660		
20°	MAX-EXT	1490	1490	1050	720	480	
	HALF-EXT	1490	1490	1050	720	390	
	NOT-EXT	1490	1490	1050	550		
40°	MAX-EXT	990	990	720	550	440	
	HALF-EXT	990	990	720	550	390	
	NOT-EXT	990	990	720	550		
60°	MAX-EXT	770	770	610			
	HALF-EXT	770	770	610			
	NOT-EXT	770	770	610			

CRANE SPECIFICATIONS	
Maximum Rated Load (Deployed)	22,000 lbs
Maximum Rated Load (P&C)	2,200 lbs
Maximum Working Radius	71.9 ft (boom), 74 ft (jib)
Maximum Lifting Height	75 ft (boom), 100 ft (jib)
Wire Rope	
Wet Weight	30,865 lbs with secondary electrical powerpack
Maximum Hoist/Winch-Down Speed (by Hook Block)	33/52 ft-per-minute (4-Part) 66/105 ft-per-minute (2-Part) 131/210 ft-per-minute (1-Part)
Boom Length	19 ft - 76 ft
Maximum Boom Telescope Speed	57 feet in 88 seconds
Boom Structure	6-section telescoping, hexagonal-box construction
Slewing	360°, unlimited, 1.3RPM

TRAVEL SPECIFICATIONS	
Drive System	Hydraulic/Hydrostatic 2-speed, continuous-variable forward and reverse
Travel Speed	0 - 1.6 mph
Maximum Travel Angle Limit	20° fore-and-aft and side-side
Track Ground Length	8.3 ft
Track Width (per track)	1.31 ft
Track Ground Pressure	9.9 psi

POWERPLANT SPECIFICATIONS	
Primary	Yanmar 40 hp diesel engine with electric starter
Fuel Capacity	22 gal
Secondary	15 hp electric motor

SAFETY FEATURES & OPERATOR AIDS	
Crane Management Unit (CMU)	Integrated self-diagnostic computer, monitors switch status and control configuration
Anti-Two Block (A2B) & Minimum Wire Rope Safeties	Prevents structural damage from improper winch use
Hydraulic Cylinder Holding Valves	Prevents hydraulic cylinder collapse if power is lost
Emergency Stop Switch	Disables crane and outrigger functions, when pressed
Hook Safety Latches	Prevents attached loads from slipping off
Built-in Tie-Down/Tie-Back Brackets and Hoisting Rings	Fixed-chassis points for proper and safe tie-downs and hoisting lines
Safety Override Switches	Overrides failed-safe systems
Load Moment Indicator (LMI)	Computer-controlled safe load indicator with real-time crane configuration reporting and full-color display for maximum operator situational awareness
Radio Remote Controller	Full-function (Crane and Outrigger Mode) with situational-awareness display
Audible and Visual Alert Systems	Stand-alone audio- and voice-warning system and multi-color alert indicators



5326 W. Mohave St | Phoenix, AZ 85043
844.264.8994 | 602.442.4000
 SmileyLiftingSolutions.com