

# URW345CX Mini-Crawler

URW345CX Mini-Crawler

SPYDERCRANE

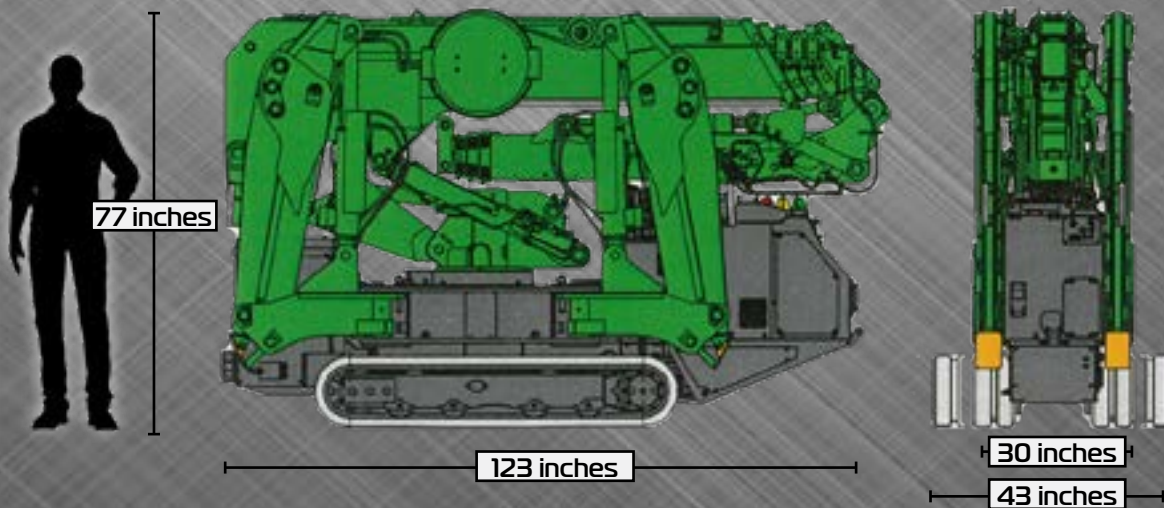
Pick-&-Carry Capable

Lithium-Ion Powerplant

57-Ft Jib Tip Height

39-Ft Tip Height

7,121 lbs at 3.3 feet

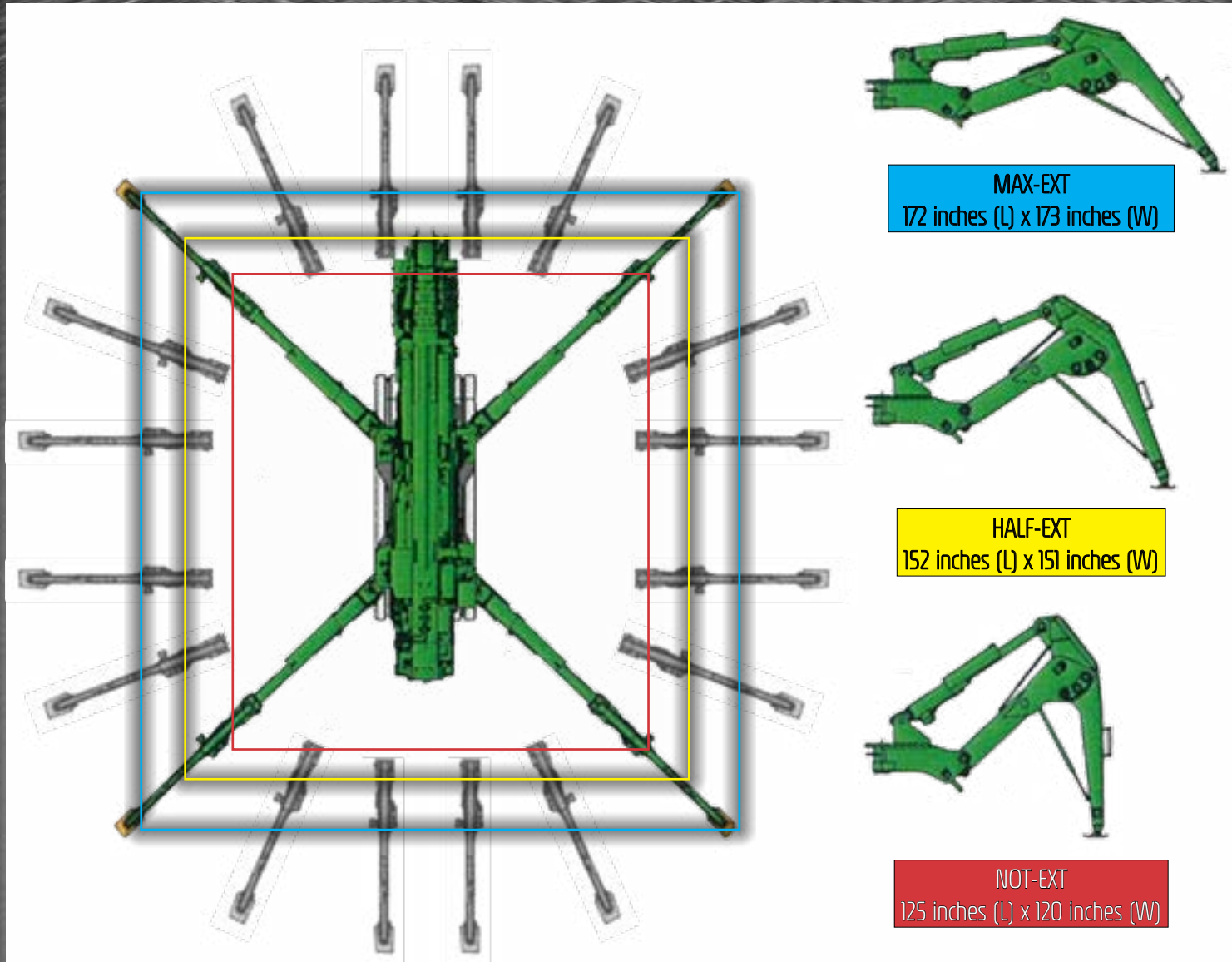


5326 W. Mohave St | Phoenix, AZ 85043

844.264.8994 | 602.442.4000

SmileyLiftingSolutions.com

# Conform Your SPYDERCRANE's Outrigger Deployment to the workspace



**MAX-EXT**  
172 inches (L) x 173 inches (W)

**HALF-EXT**  
152 inches (L) x 151 inches (W)

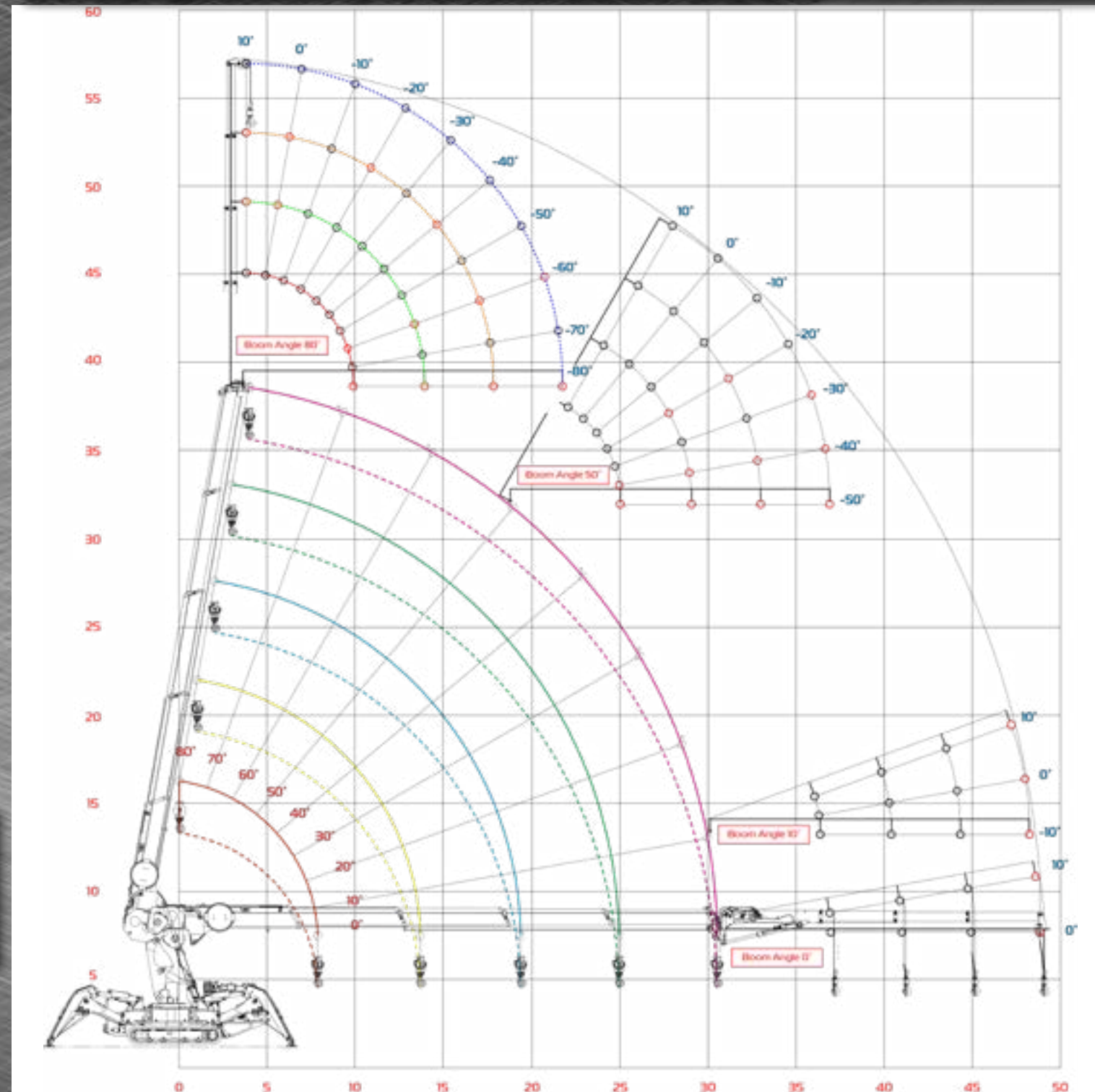
**NOT-EXT**  
125 inches (L) x 120 inches (W)

INCLUDED ACCESSORIES	
Multiple Hook Blocks	4-Part Hook Block for maximum lifting capacity and 1-Part Hook Block for maximum lifting height/speed
Tool Kit	Selection of hand tools and included storage bag; everything needed to perform routine service and maintenance
Tilt Jib	Compatible with 1-Part Hook Block and Searcher Hook; recovers working radius lost at high boom angles
Remote Controller	RF-based handheld allows remote operation of outriggers and upperworks from up to 330 feet away

Pick-&-Carry Mode (Net-Rated)				
	Working Radius (feet)			
BOOM STAGE 1	3.3	4.9	6.6	8.7
	1102	1102	1102	595
BOOM STAGE 2	3.3	6.6	9.8	11.5
	1102	1102	419	198



LIFTING PERFORMANCE		
Maximum Capacity	7,121 lbs at 3.3 ft working range	
Working Range	Working Radius	3.3 ft - 32.2 ft (52 ft with Tilt Jib)
	Maximum Hook Height	approx. 36 ft (54 ft with Tilt Jib)



URW345CX Boom Color Key		
Line Color	Solid	Dash
Red	Boom Stage 1	Stage 1 Hook Height
Yellow	Boom Stage 2	Stage 2 Hook Height
Cyan	Boom Stage 3	Stage 3 Hook Height
Green	Boom Stage 4	Stage 4 Hook Height
Magenta	Boom Stage 5	Stage 5 Hook Height

URW345CX Jib Color Key	
Line Color	Dash
Red	Jib Stage 1
Green	Jib Stage 2
Orange	Jib Stage 3
Blue	Jib Stage 4

Jib Hook Block Key	
Circle Color	Hook Block
Red Circle	Searcher Hook
Black Circle	1-Part Hook

URW345CX Mini-Crawler

SPYDERCRANE

SPYDERCRANE

URW345CX Mini-Crawler

## Rated Load Chart (Boom)

	Deployment State	Working Radius (feet)																								
		3.3	4.9	7.2	8.2	8.5	8.7																			
BOOM STAGE 1	MAX-EXT	7121	7121	7121	6680	6173	5908																			
	HALF-EXT	7121	7121	7121	6680	6173	5908																			
	NOT-EXT	7121	7121	7121	5886	5379	5115																			
BOOM STAGE 2		3.3	4.9	7.2	8.2	8.5	8.9	9.8	11.5	13.1	14.7															
	MAX-EXT	7121	7121	7121	6349	6129	5908	5467	4586	3902	2976															
	HALF-EXT	7121	7121	7121	6349	6129	5908	5467	4012	2844	2205															
BOOM STAGE 3		3.3	4.9	6.6	8.2	8.5	8.9	9.8	11.5	13.1	14.8	16.4	18	19.7	20.7											
	MAX-EXT	5137	5137	5137	5137	5137	5137	4696	4145	3814	3064	2359	2006	1609	1433											
	HALF-EXT	5137	5137	5137	5137	5137	5137	4696	4012	2888	2315	1765	1521	1191	1058											
BOOM STAGE 4		3.6	4.9	6.6	8.2	8.5	8.9	9.8	11.5	13.1	14.8	16.4	18	19.7	21.3	23	24.6	26.2	26.4							
	MAX-EXT	3263	3263	3263	3263	3263	3263	3263	3263	3263	2822	2491	2094	1698	1521	1235	1058	9.26	926							
	HALF-EXT	3263	3263	3263	3263	3263	3263	3263	3263	3042	2403	1896	1631	1301	1168	926	794	683	683							
BOOM STAGE 5		4.6	4.9	6.6	8.2	8.5	8.9	9.8	11.5	13.1	14.8	16.4	18	19.7	21.3	23	24.6	26.2	27.9	29.5	31.2	32.2				
	MAX-EXT	3042	3020	2866	2756	2734	2690	2601	2535	2491	2381	2271	2094	1786	1587	1323	1191	992	948	772	705	639				
	HALF-EXT	3042	3020	2866	2756	2734	2690	2601	2535	2491	2381	1984	1698	1367	1235	1014	926	750	728	573	507	463				
	NOT-EXT	3042	3020	2866	2756	2734	2690	2601	2535	2050	1676	1323	1146	904	816	639	595	463	441	331	287	243				

## CRANE SPECIFICATIONS

Maximum Rated Load (Deployed)	7121 lbs
Maximum Rated Load (P&C)	1102 lbs
Maximum Working Radius	32.25 ft (boom), 52 ft (jib)
Maximum Lifting Height	35.75 ft (boom), 54 ft (jib)
Wire Rope	8mm (5/16") x 338 ft
Wet Weight	8091 lbs
Maximum Hoist/Winch-Down Speed (by Hook Block)	22/35 ft-per-minute (4-Part) 45/70 ft-per-minute (2-Part) 89/140 ft-per-minute (1-Part)
Boom Length	9.5 ft - 33 ft
Maximum Boom Telescope Speed	23.5 feet in 36 seconds
Boom Structure	5-section telescoping, hexagonal-box construction
Jib Length	6.5 ft - 18.75 ft
Maximum Jib Telescope Speed	12.25 feet in 24 seconds
Jib Structure	4-section telescoping, square-box construction
Slewing	360°, unlimited, 1.2RPM

## TRAVEL SPECIFICATIONS

Drive System	Hydraulic/Hydrostatic 2-speed, continuous-variable forward and reverse
Travel Speed	0 - 1.4 mph
Maximum Travel Angle Limit	15° fore-and-aft and side-side
Track Ground Length	4.5 ft
Track Width (per track)	.66 ft
Track Ground Pressure	9.5 psi

## POWERPLANT SPECIFICATIONS

Internal Power	Lithium-Ion Battery Array
Array Voltage & Capacity	51.2V (DC); 159aH
Array Composition	Four packs in-series and three in-parallel
Input Voltage & Current	95-265V (AC) (50-60Hz, single-phase); 16A (200V)/15A (100V)
Output Voltage & Current	48V (DC); 60A (200V)/30A (100V)
Charging Time (from 0% to 100%)	4.4 hours at 200V; 7.9 hours at 100V

## SAFETY FEATURES & OPERATOR AIDS

Crane Management Unit (CMU)	Integrated self-diagnostic computer, monitors switch status and control configuration
Anti-Two Block (A2B) & Minimum Wire Rope Safeties	Prevents structural damage from improper winch use
Hydraulic Cylinder Holding Valves	Prevents hydraulic cylinder collapse if power is lost
Emergency Stop Switch	Disables crane and outrigger functions, when pressed
Hook Safety Latches	Prevents attached loads from slipping off
Built-in Tie-Down/Tie-Back Brackets and Hoisting Rings	Fixed-chassis points for proper and safe tie-downs and hoisting lines
Safety Override Switches	Overrides failed-safe systems
Load Moment Indicator (LMI)	Computer-controlled safe load indicator with real-time crane configuration reporting and full-color display for maximum operator situational awareness
Radio Remote Controller	Full-function (Crane and Outrigger Mode) with situational-awareness display
Audible and Visual Alert Systems	Stand-alone audio- and voice-warning system and multi-color alert indicators

### Boom Stage 5/Jib Stage 1

Tilt	BA80°	BA70°	BA60°	BA50°	BA40°	BA30°	BA20°	BA10°	BA0°
10°	2205	2205	1985	882	507	243	110	22	0
0°	2205	1984	1874	905	463	221	88	22	0
-10°	0	0	0	0	0	0	88	22	0
-20°	1874	1874	1588	816	441	221	88	0	0
-30°	0	0	0	0	0	221	0	0	0
-40°	1654	1654	1455	772	419	0	0	0	0
-50°	0	0	0	772	0	0	0	0	0
-60°	1454	1454	1389	0	0	0	0	0	0
-70°	0	1433	0	0	0	0	0	0	0
-80°	1433	0	0	0	0	0	0	0	0

### Boom Stage 5/Jib Stage 2

Tilt	BA80°	BA70°	BA60°	BA50°	BA40°	BA30°	BA20°	BA10°	BA0°
10°	1367	1323	1191	838	419	176	66	0	0
0°	1323	1191	1147	750	375	176	44	0	0
-10°	0	0	0	0	0	0	44	0	0
-20°	1147	1103	1080	639	331	154	44	0	0
-30°	0	0	0	0	0	132	0	0	0
-40°	1080	1058	1036	573	309	0	0	0	0
-50°	0	0	0	573	0	0	0	0	0
-60°	1036	1014	1014	0	0	0	0	0	0
-70°	0	1014	0	0	0	0	0	0	0
-80°	1014	0	0	0	0	0	0	0	0

### Boom Stage 5/Jib Stage 3

Tilt	BA80°	BA70°	BA60°	BA50°	BA40°	BA30°	BA20°	BA10°	BA0°
10°	1103	1103	1058	728	353	154	44	0	0
0°	816	772	706	573	265	110	22	0	0
-10°	320	310	270	200	100	40	0	0	0
-20°	706	684	595	441	221	88	0	0	0
-30°	0	0	0	0	0	88	0	0	0
-40°	595	551	507	397	198	0	0	0	0
-50°	0	0	0	397	0	0	0	0	0
-60°	507	463	441	0	0	0	0	0	0
-70°	0	441	0	0	0	0	0	0	0
-80°	441	0	0	0	0	0	0	0	0

### Boom Stage 5/Jib Stage 4

Tilt	BA80°	BA70°	BA60°	BA50°	BA40°	BA30°	BA20°	BA10°	BA0°
10°	1103	1103	1058	728	353	154	44	0	0
0°	816	772	706	573	265	110	22	0	0
-10°	320	310	270	200	100	40	0	0	0
-20°	706	684	595	441	221	88	0	0	0
-30°	0	0	0	0	0	88	0	0	0
-40°	595	551	507	397	198	0	0	0	0
-50°	0	0	0	397	0	0	0	0	0
-60°	507	463	441	0	0	0	0	0	0
-70°	0	441	0	0	0	0	0	0	0
-80°	441	0	0	0	0	0	0	0	0